

Eric C. Stark

EricStark1@outlook.com | 973.747.9537

## TABLE OF CONTENTS

1. Japanese Edo + English Photo Studio
2. Houseboat
3. Tudor Inspired Living Room



1. JAPANESE EDO + ENGLISH APARTMENT AND PHOTO STUDIO

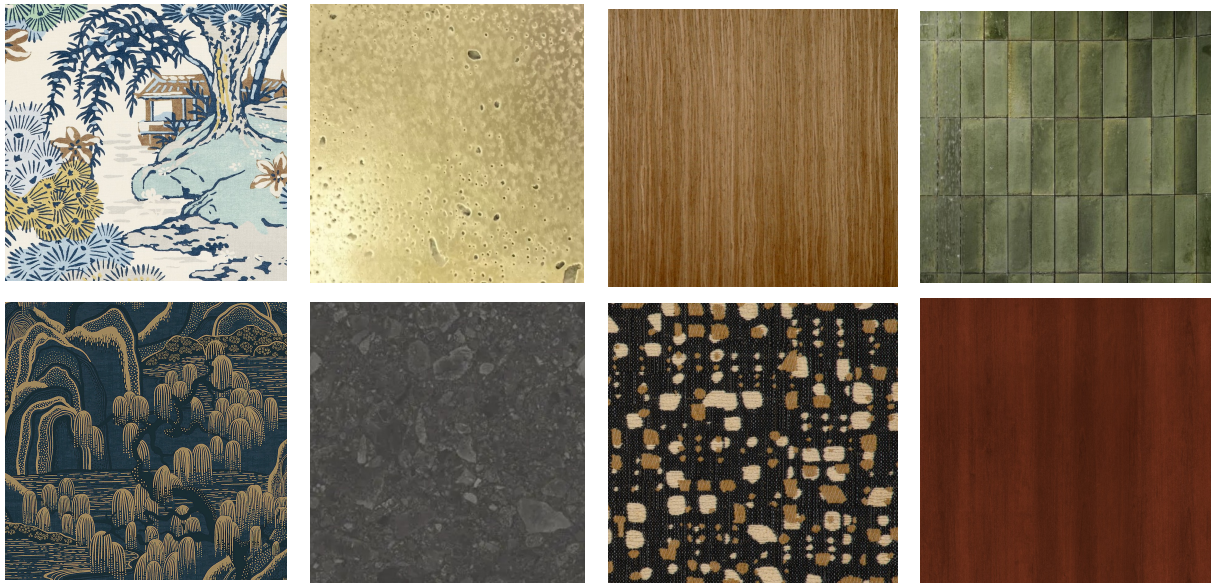


DESIGN CONCEPT

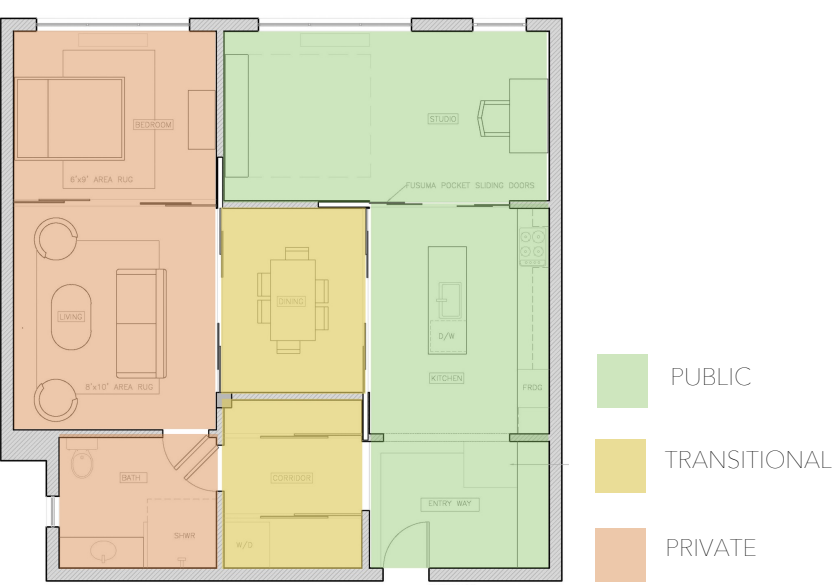
The client is a professional portrait and editorial photographer. She will have models at her house on a regular basis, so a dedicated photo studio will be required. The Apartment is located in Chelsea, NY by the Highline.

This apartment will focus on Japanese architectural elements - fusuma particularly, combined with English fabrics and patterns. The spaces will be transformative and accommodate both the private residential, and public commercial needs of the client.

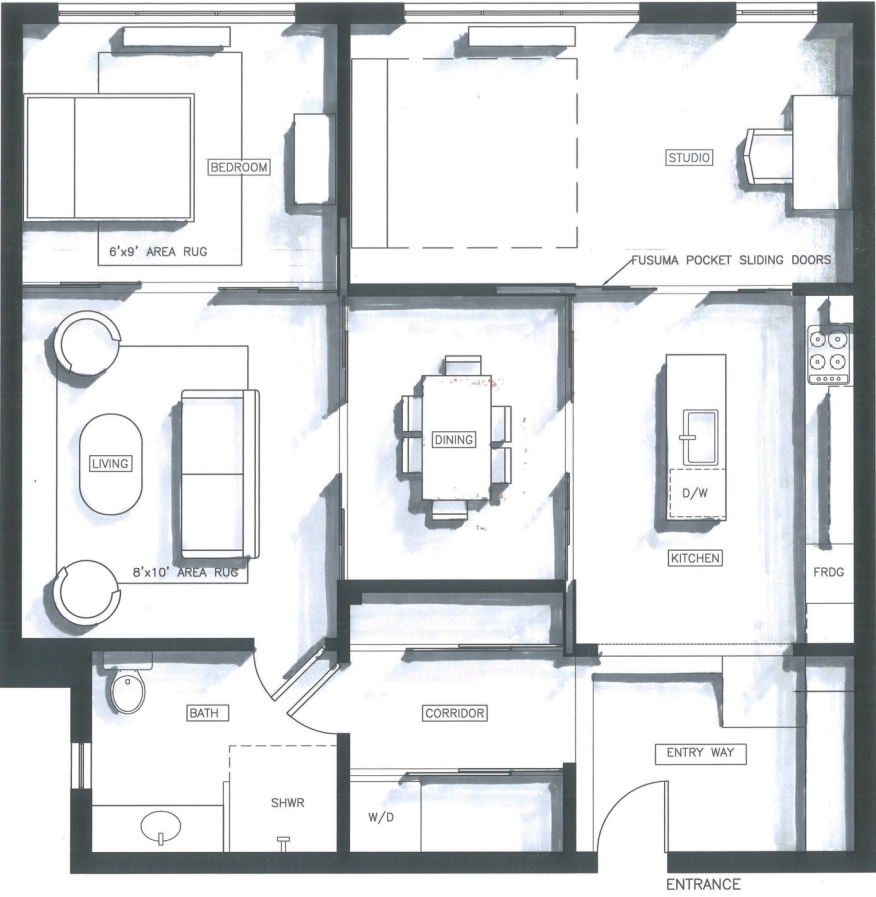
MAJOR FINISHES / COLOR PALETTE



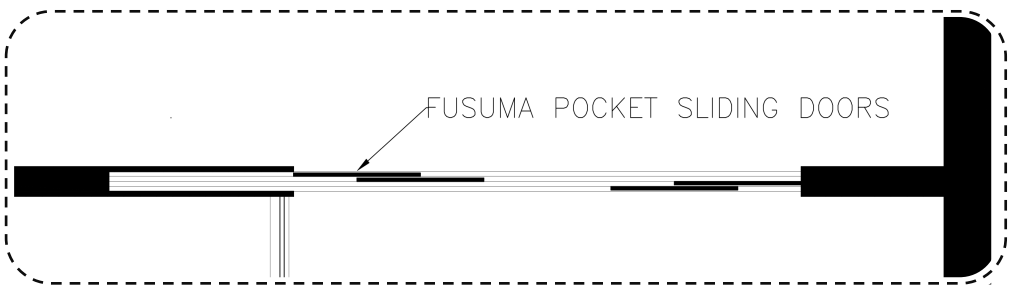
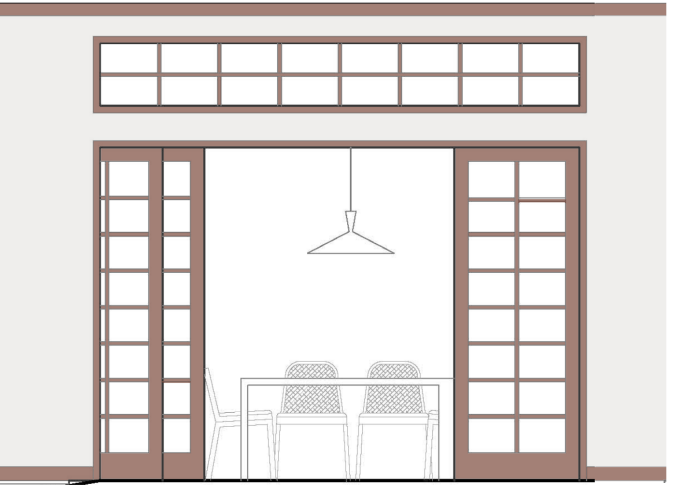
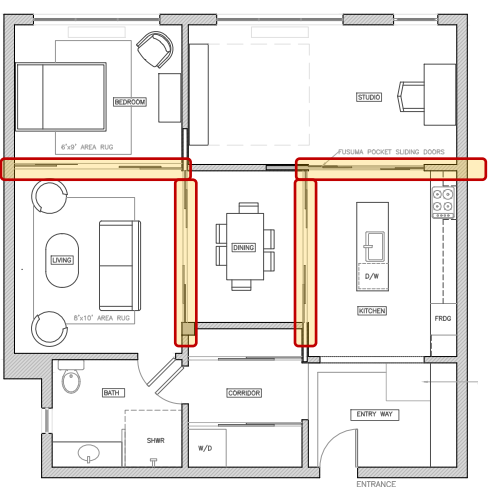
PUBLIC & PRIVATE DIAGRAM



FURNITURE PLAN



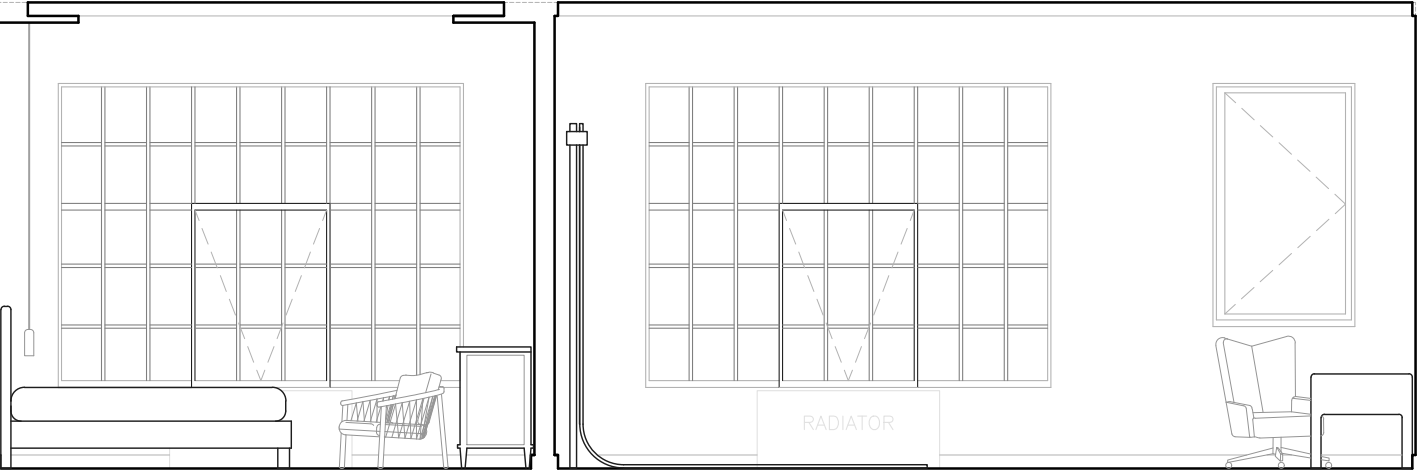
FUSUMA DOOR DETAIL



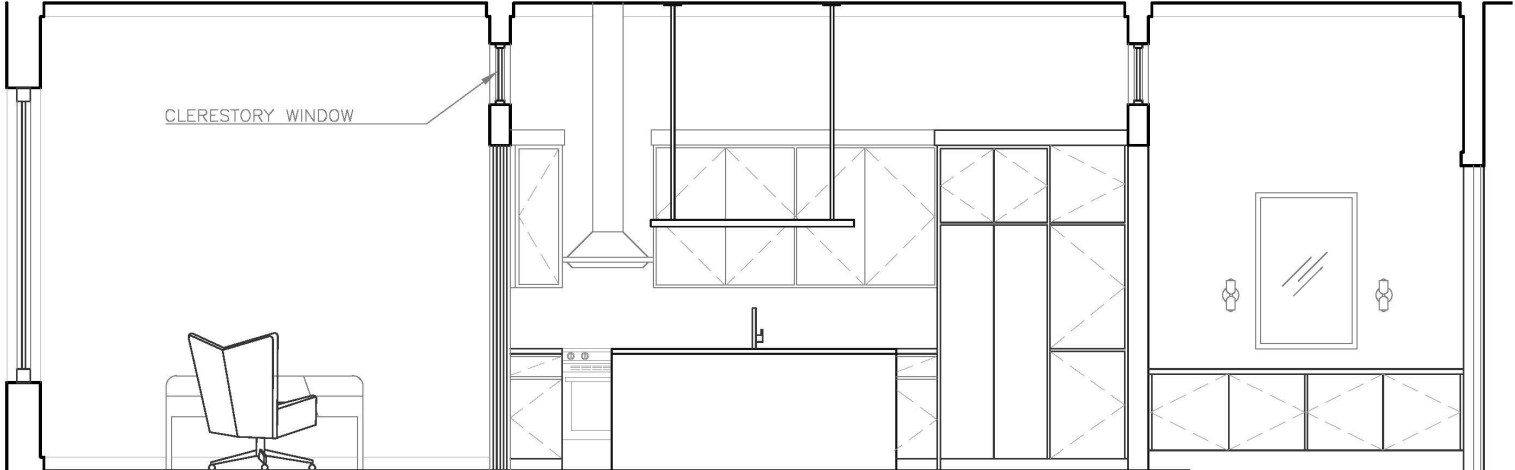
1. JAPANESE EDO + ENGLISH APARTMENT AND PHOTO STUDIO



ELEVATIONS



SOUTH ELEVATION



WEST ELEVATION

BEDROOM



BED FRAME  
DWR



ACCENT CHAIR  
DWR



ANTIQUE DRESSER  
FIRST DIBS



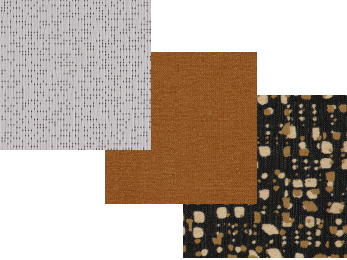
PENDANTS  
IN COMMON WITH



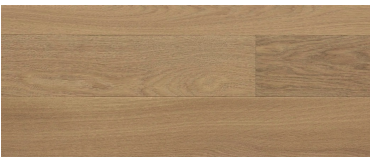
WALLCOVERING  
BORASTAPETER



AREA RUG  
VAN BESOUW



ACCENT PILLOW 1  
UNITED FABRICS  
ACCENT PILLOW 2  
ROMO  
ACCENT PILLOW 3



FLOORS  
ASH OAK



WALL PAINT  
BM STONINGTON GRAY



TRIM  
BROWN/ CHERRY

ENTRYWAY



FLOOR  
NEMO REACTION



LOWER CABINET  
MEDIUM WALNUT



WALL SCONCE  
IN COMMON WITH



PENDANT LIGHT  
ARHAUS

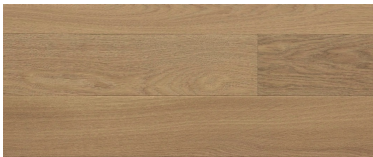
OFFICE



OFFICE CHAIR  
CB2



DESK  
CB2



FLOORS  
ASH OAK



WALL PAINT  
BM STONINGTON GRAY

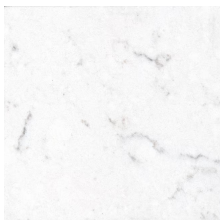


TRIM  
BROWN/ CHERRY

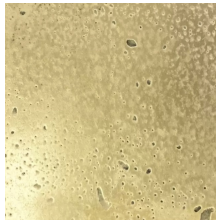
KITCHEN



LOWER CABINET:  
MEDIUM WALNUT



COUNTER  
QUARTZ



BACKSPLASH:  
PEAU DE BETON



UPPER CABINET:  
WHITE ARCYLIC



RANGE  
KITCHENAID



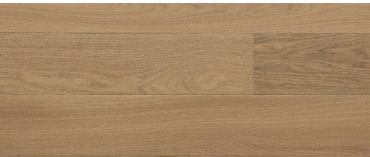
HOOD VENT  
KITCHENAID



FAUCET  
BRIZO



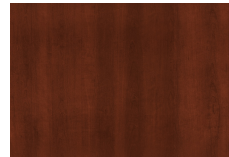
SPECIALTY PENDANT:  
LIGHTS OF SCANDANAVIA



FLOORS  
ASH OAK



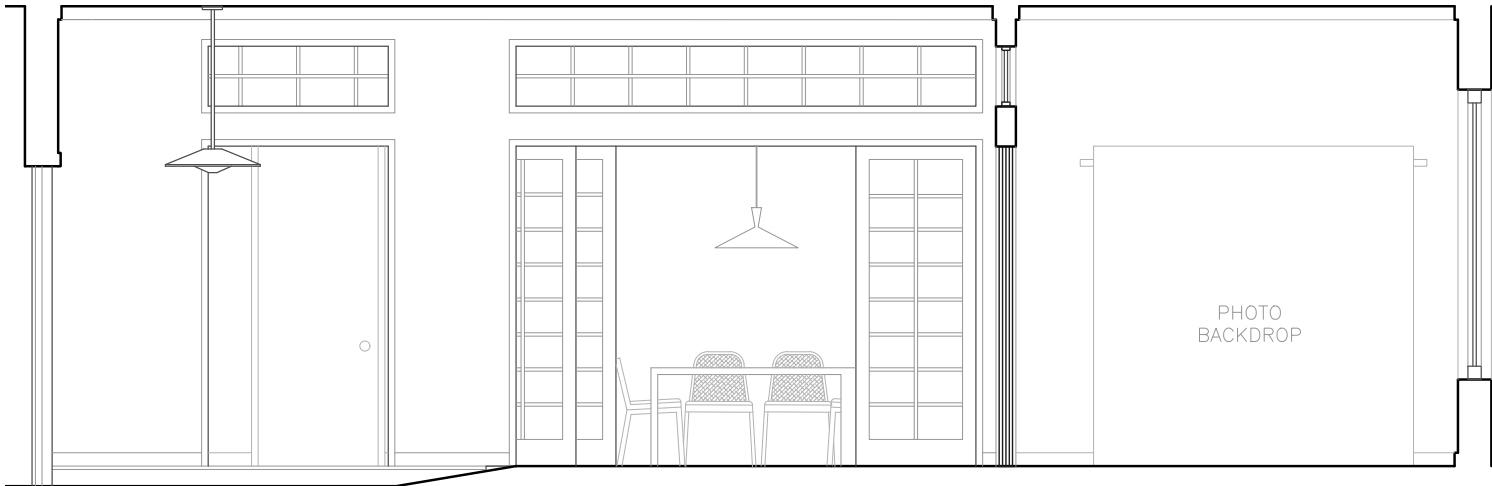
WALL PAINT  
BM STONINGTON GRAY



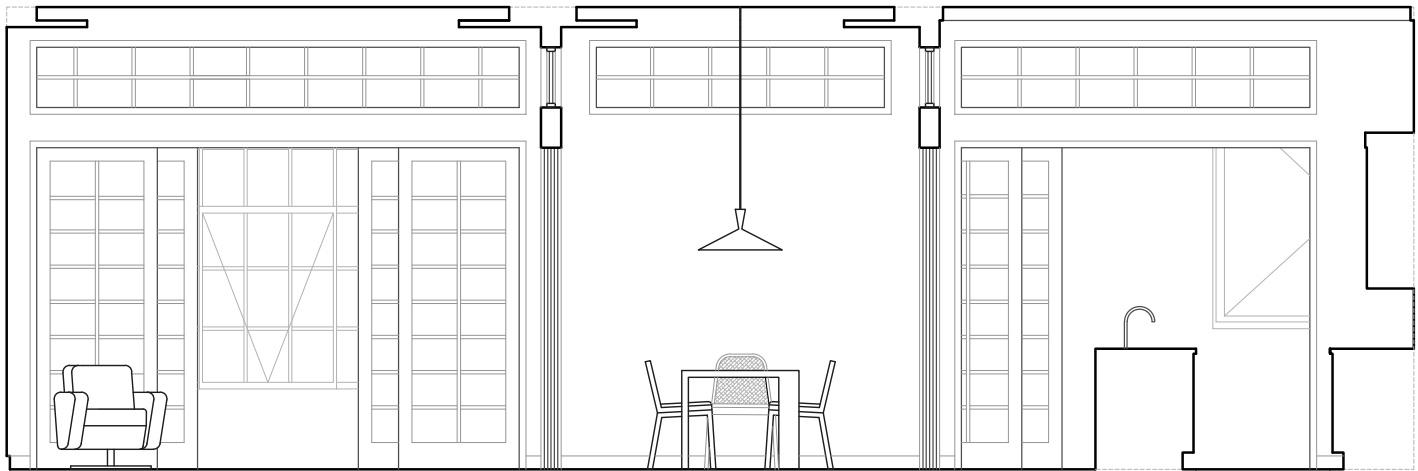
TRIM  
BROWN/ CHERRY

1. JAPANESE EDO + ENGLISH APARTMENT AND PHOTO STUDIO

ELEVATIONS



EAST SECTIONAL ELEVATION



SOUTH SECTIONAL ELEVATION

LIVING ROOM



SLEEPER SOFA  
DWR



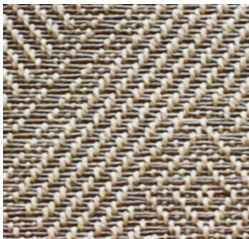
SWIVEL CHAIR  
HOLLY HUNT



COFFEE TABLE  
CB2



ARMCHAIR UPHOLSTERY  
SCALAMANDRE SEA OF TREES



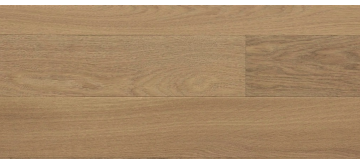
AREA RUG  
ECLIPSE



ACCENT PILLOW 1  
UNITED FABRICS

ACCENT PILLOW 2  
CLARENCE HOUSE

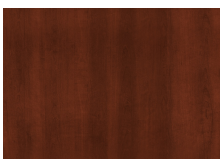
ACCENT PILLOW 3  
ROMO



FLOORS  
ASH OAK



WALL PAINT  
BM STONINGTON GRAY



TRIM  
BROWN/ CHERRY

DINING ROOM



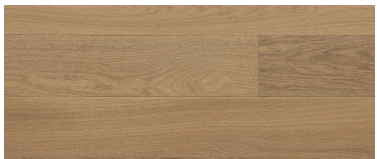
DINING TABLE:  
CB2



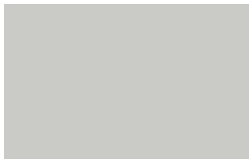
DINING CHAIRS:  
CB2



PENDANT LIGHT  
CB2



FLOORS  
ASH OAK



WALL PAINT  
BM STONINGTON GRAY



TRIM  
BROWN/ CHERRY

BATHROOM



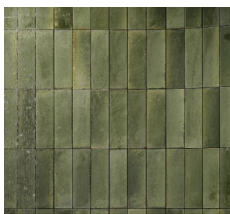
VANITY:  
WS BATH COLLECTIONS



SHOWER FIXTURES  
DELTA



SCONCE  
KELLY WEARSTLER



WALL TILE  
THE TILE SHOP LOOK OLIVIA



FLOOR:  
ANN SACKS DAVINA

1. JAPANESE EDO + ENGLISH APARTMENT AND PHOTO STUDIO





2. HOUSEBOAT for MONET



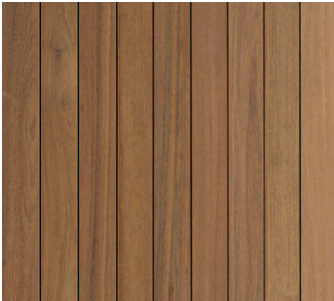
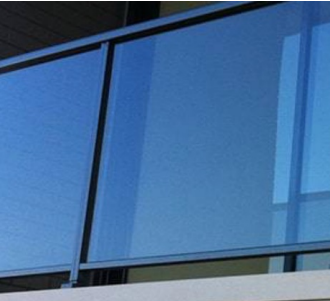
DESIGN CONCEPT



*Reinterpreting the Studio Boat.* Monet created many of his most famous painting on his studio boat. The studio space in Olana, NY will be a one-story floating house on the nearby lake. The main living spaces will be at the core and a wrap-around deck will give Monet a unique 360° studio to paint from.

MAJOR FINISHES / COLOR PALETTE

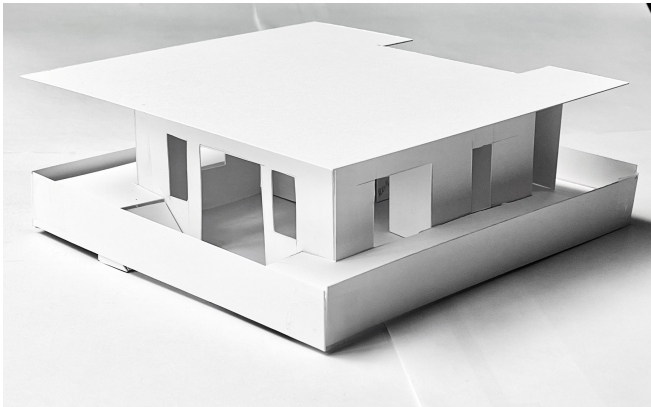
EXTERIOR  
GLASS, WOOD PANELS



INTERIOR  
LIGHT OAK FLOORS , WHITE WALLS



3D MODEL



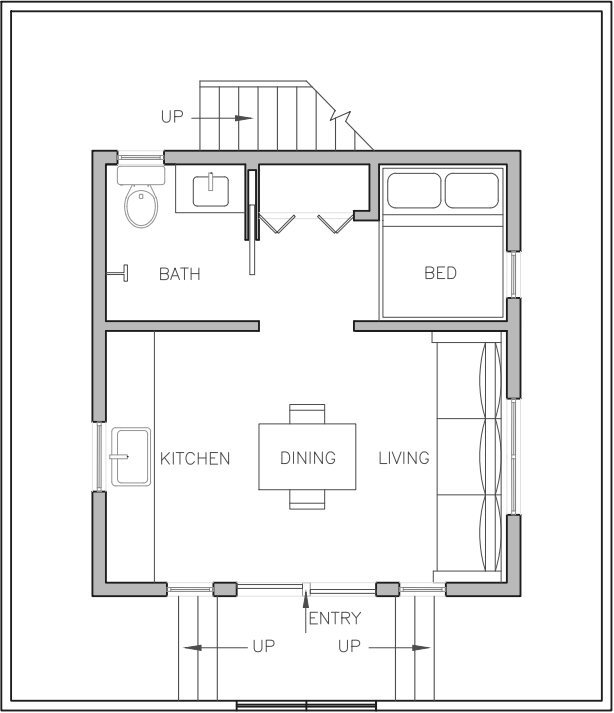
SKETCH RENDERING



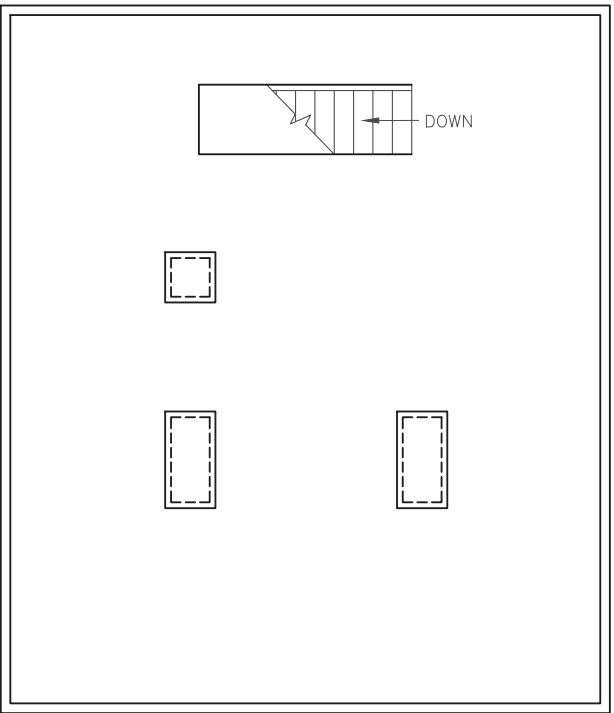
EXTERIOR ELEVATIONS



FLOOR PLAN



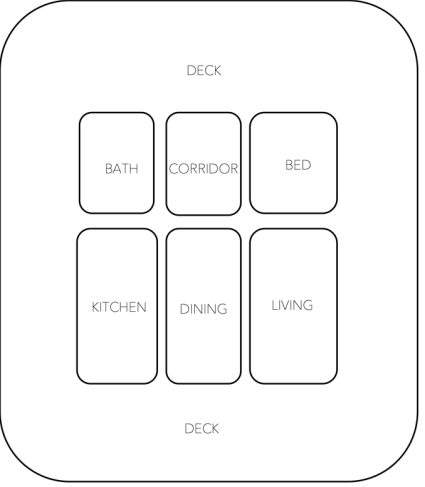
MAIN DECK



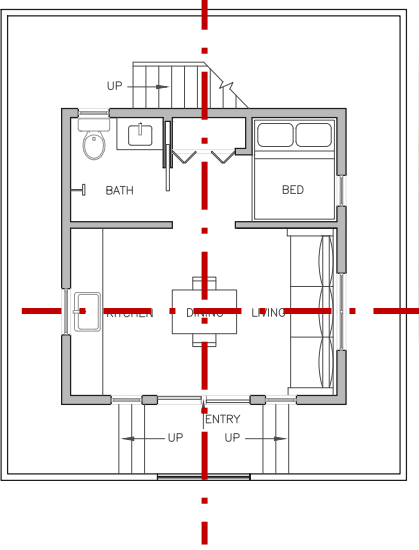
UPPER DECK

DIAGRAMS

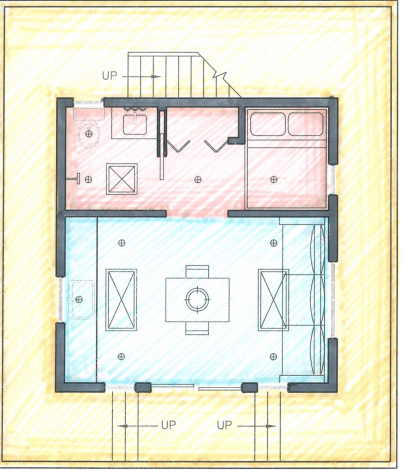
BUBBLE DIAGRAM



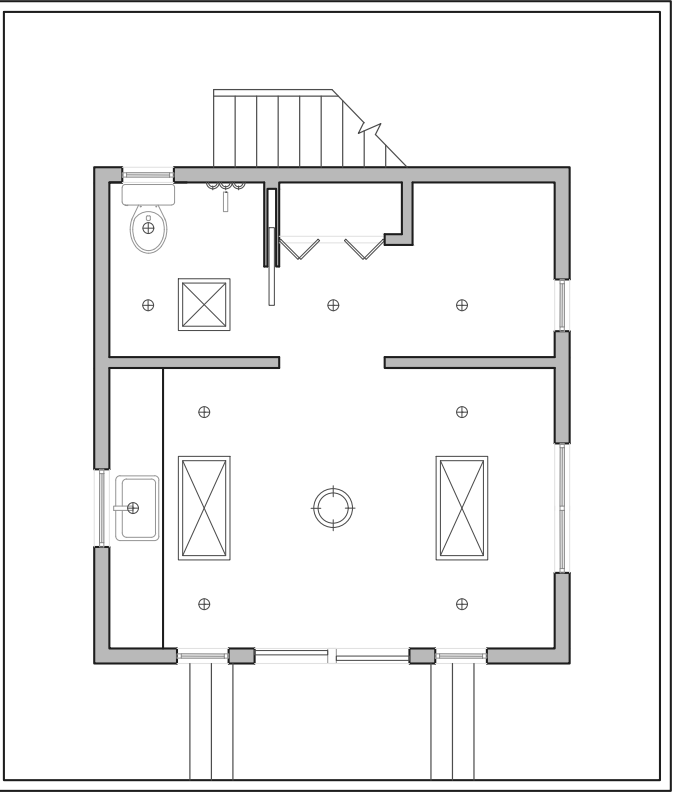
AXIAL



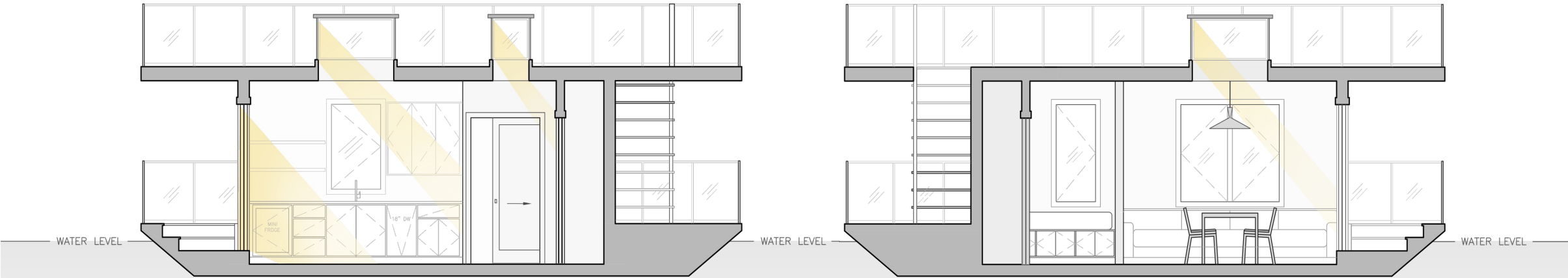
PUBLIC PRIVATE



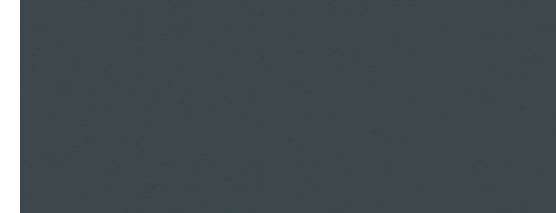
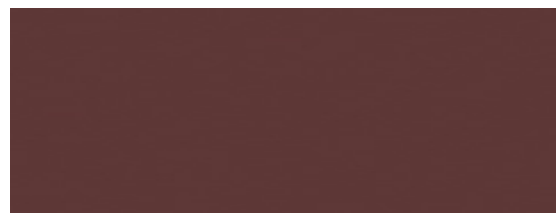
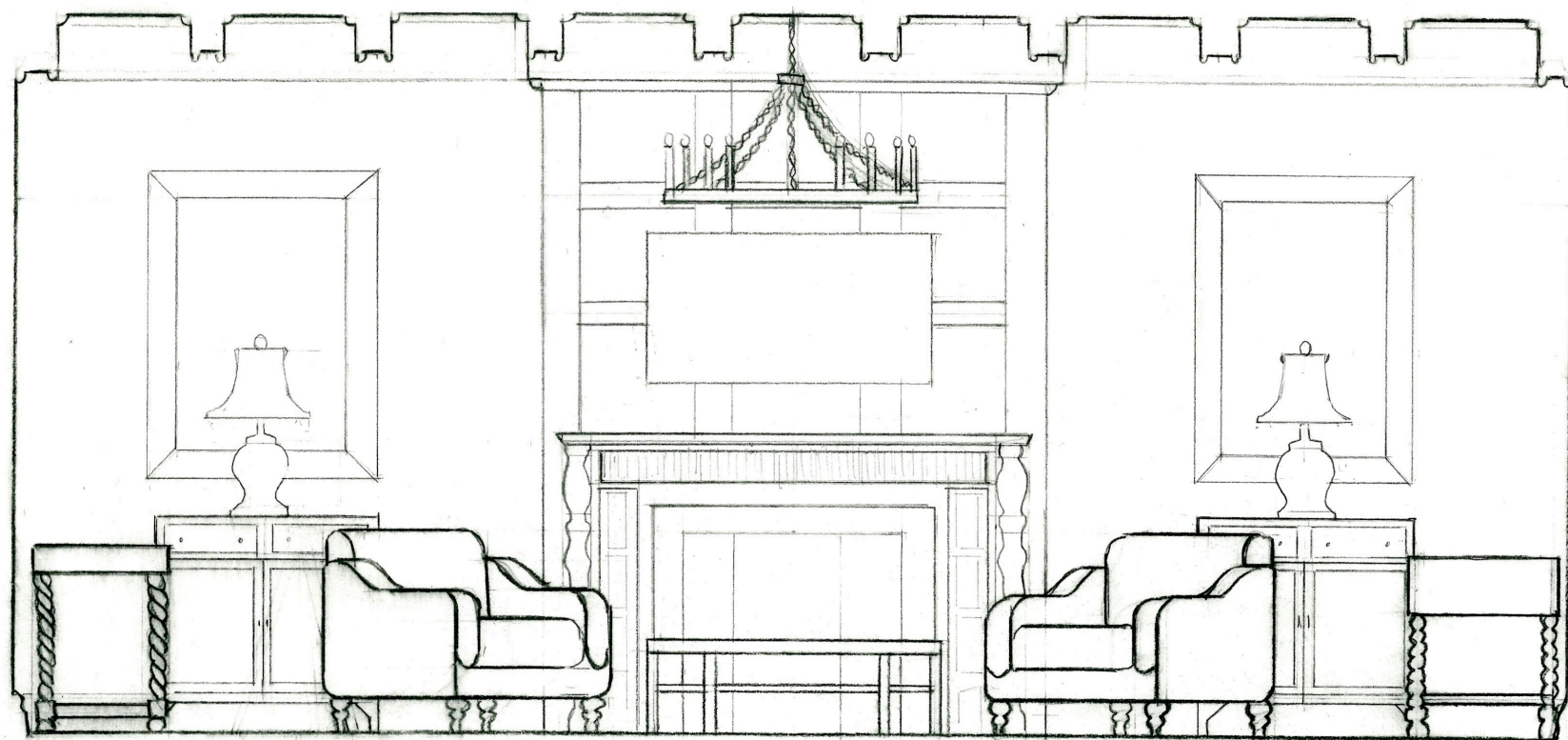
RCP



INTERIOR ELEVATIONS WITH LIGHT STUDY







2. TUDOR-INSPIRED LIVING ROOM



DESIGN CONCEPT

Tudor and Jacobean period interiors were characterized by a combination of grandeur and complexity, with a focus on warmth, coziness, and intricate decoration. The use of wood paneling, tapestry, furniture, fireplace, stained glass, and lighting created a rich and inviting atmosphere that was both functional and beautiful. This living room will incorporate authentic Tudor pieces into a timeless and cozy design

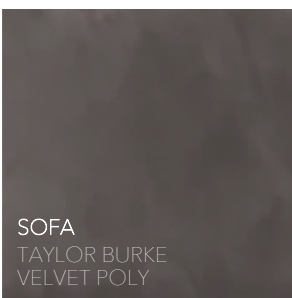
TEXTILES



AREA RUG  
COURTISAN, WOOL



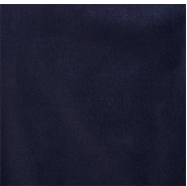
DRAPERY + TRIM  
MORRIS & CO. , RAYON  
SCHUMACHER, VISCOSE



SOFA  
TAYLOR BURKE  
VELVET POLY

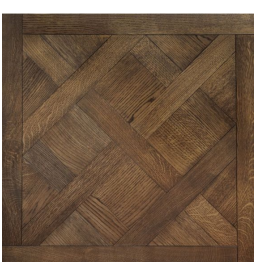


ARMCHAIR  
LULU & GEORGIA  
VELVET POLY



ACCENT PILLOWS (LEFT TO RIGHT)  
SCHUMACHER, VELVET COTTON  
SCHUMACHER, DAMASK COTTON/LINEN/SILK  
SCHUMACHER, PRINTED COTTON/LINEN

FLOORS, TRIM + CEILING



FLOORING  
RED OAK IN MINWAX PROVINCIAL  
VERSAILLES PATTERN PARQUET

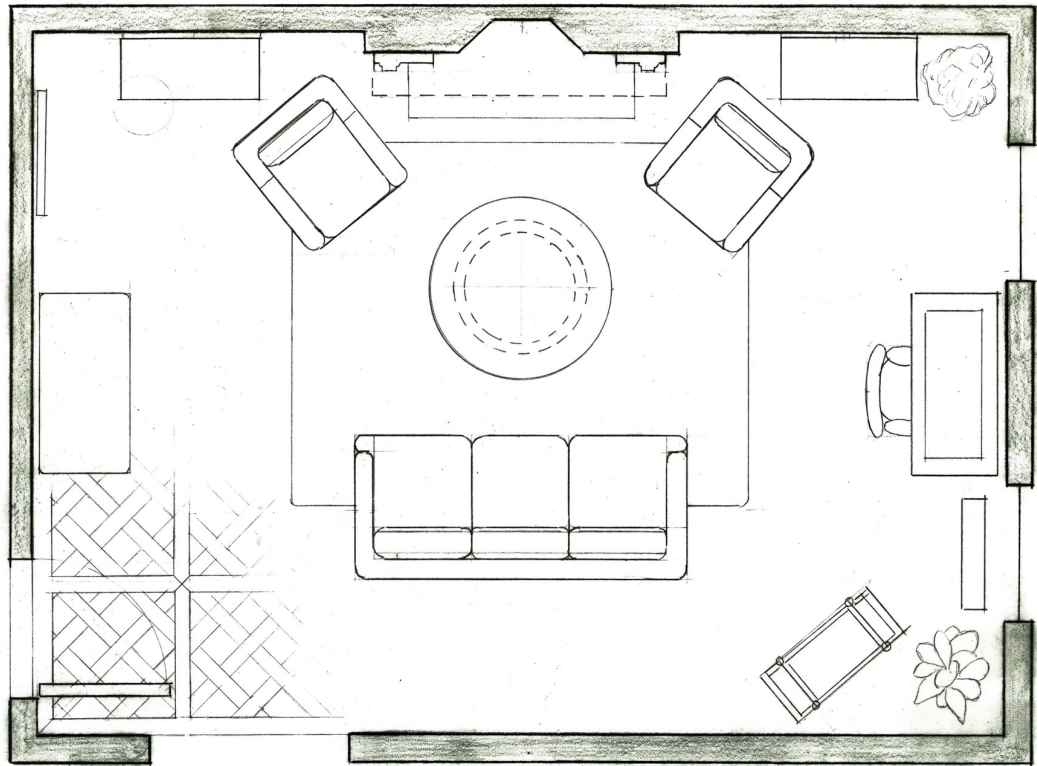


TRIM + CEILING  
MINWAX JACOBEOAN

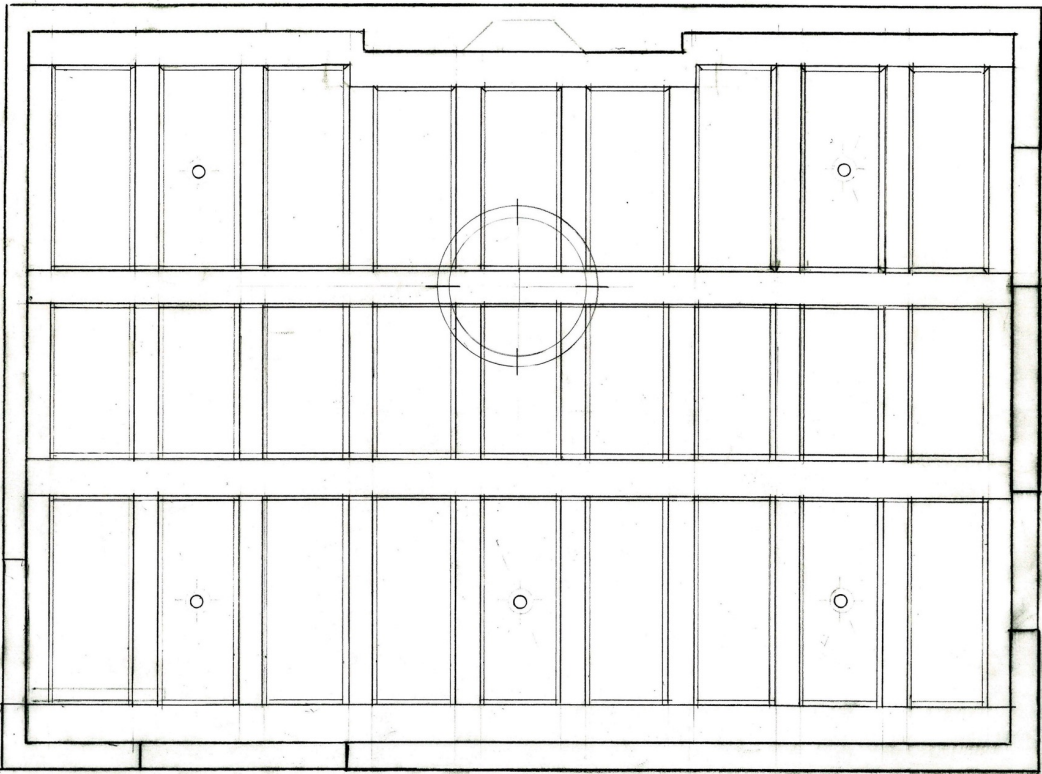
COLOR PALETTE



FLOOR PLAN



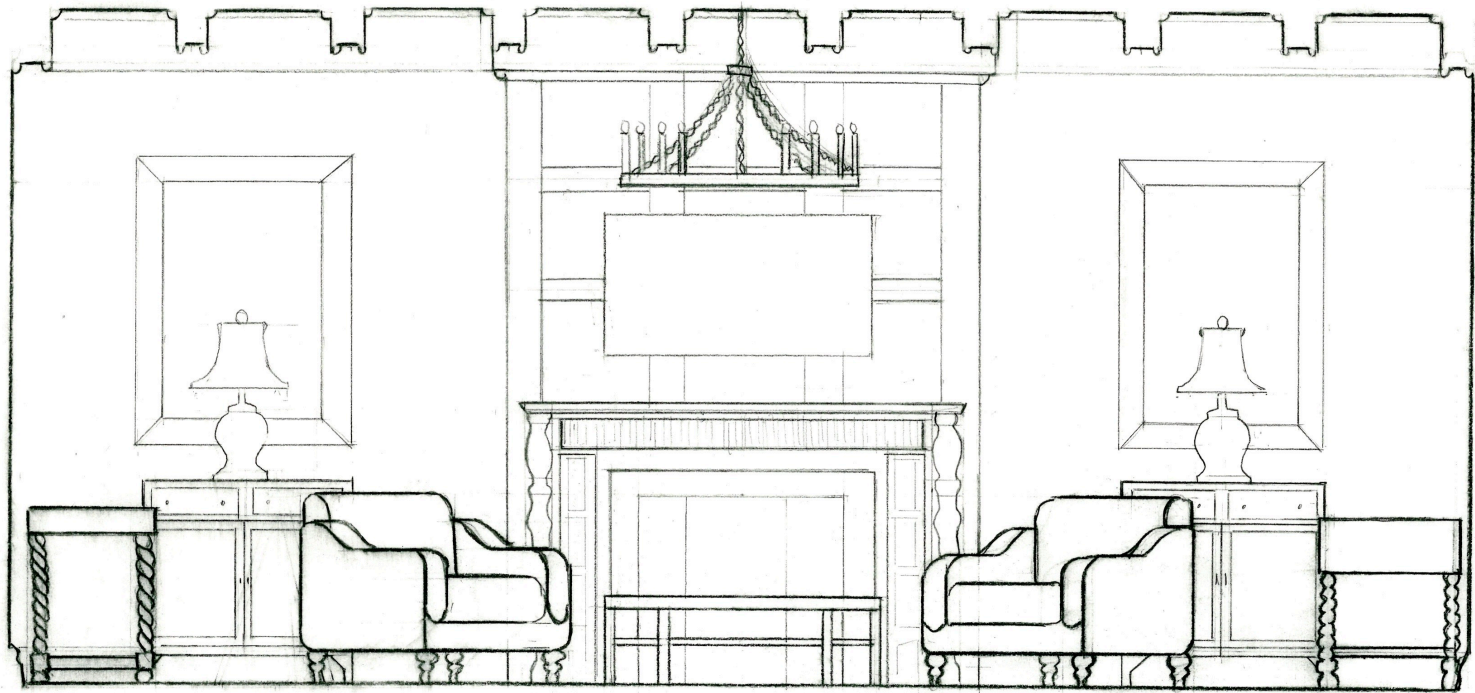
REFLECTED CEILING PLAN



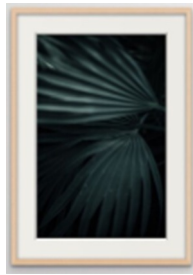
2. TUDOR-INSPIRED LIVING ROOM



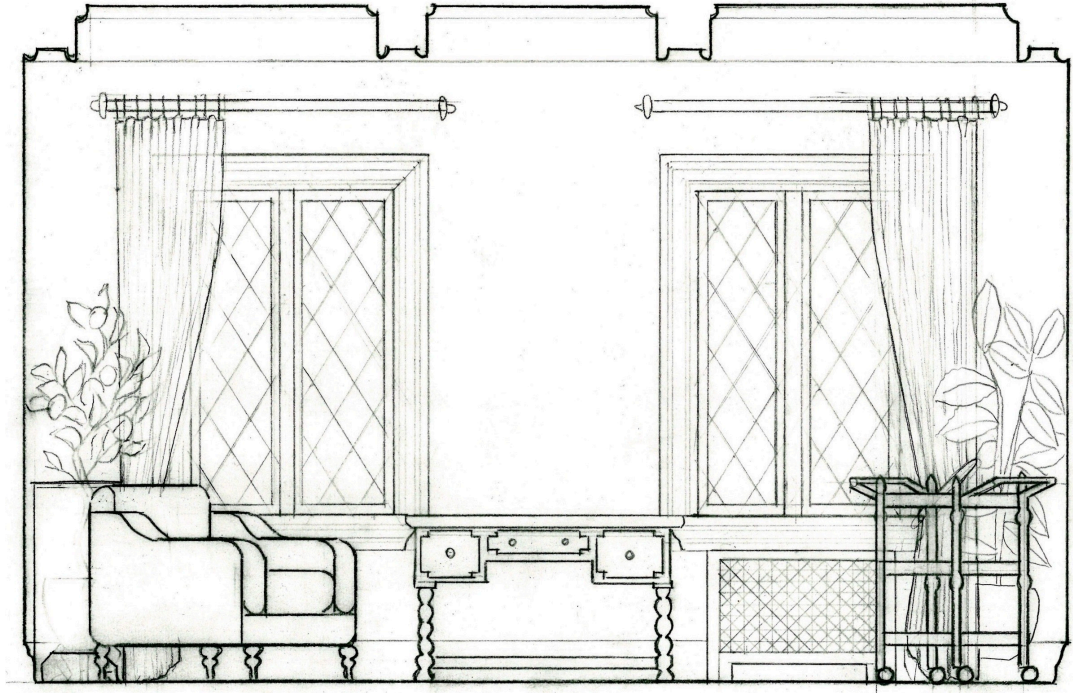
NORTH ELEVATION



RENDERING WITH FURNITURE & ACCESSORIES



EAST ELEVATION



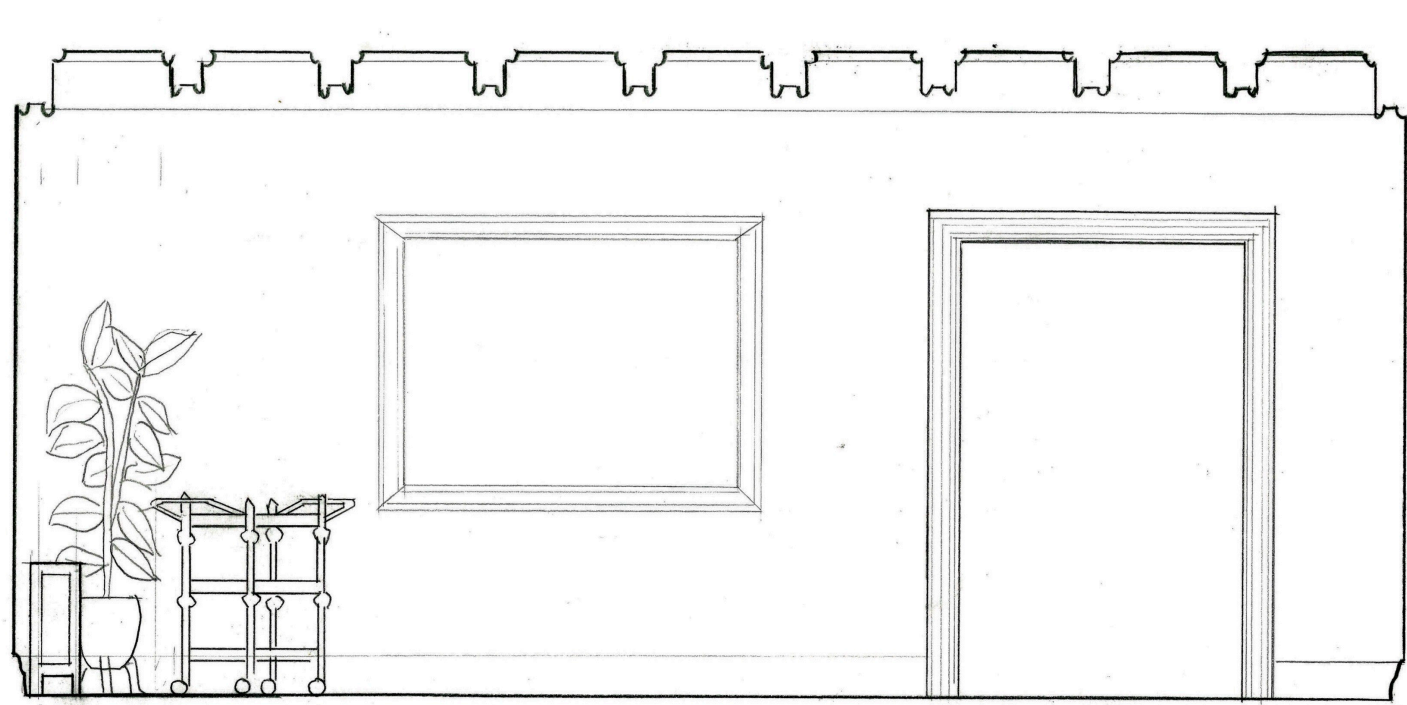
RENDERING WITH FURNITURE & ACCESSORIES



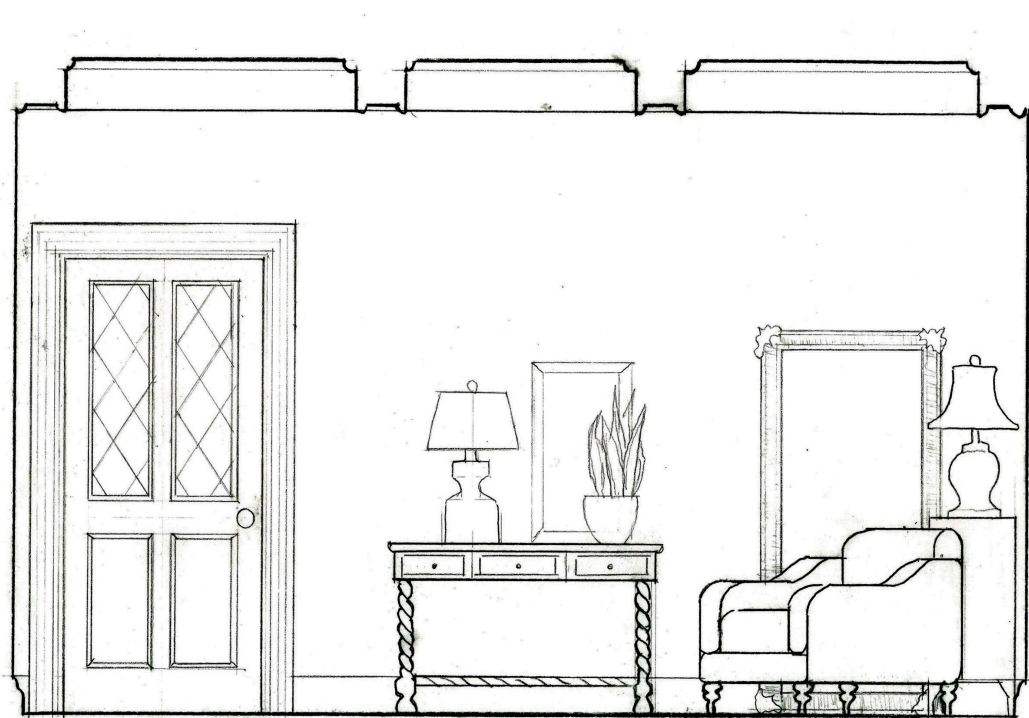
2. TUDOR-INSPIRED LIVING ROOM



SOUTH ELEVATION



WEST ELEVATION



RENDERING WITH FURNITURE & ACCESSORIES



RENDERING WITH FURNITURE & ACCESSORIES



2. TUDOR-INSPIRED LIVING ROOM